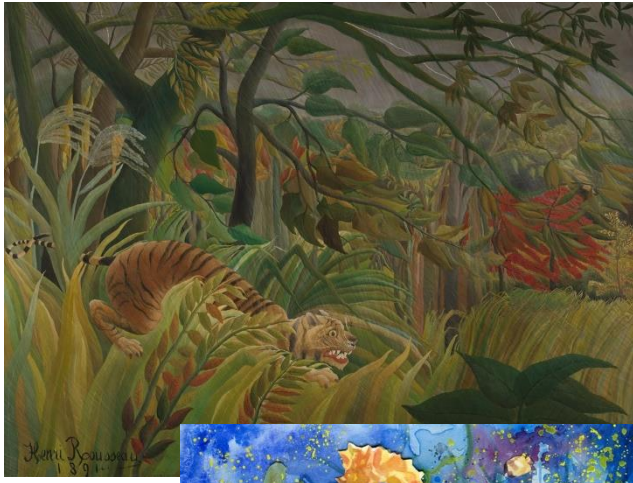


patterns, tones & shapes



Year: 6 - Autumn 2



Subject: Art

Topic: Coral reef (Biomes)

Line of inquiry: How would the African coral reef look through Henri Rousseau's eyes?

Links:

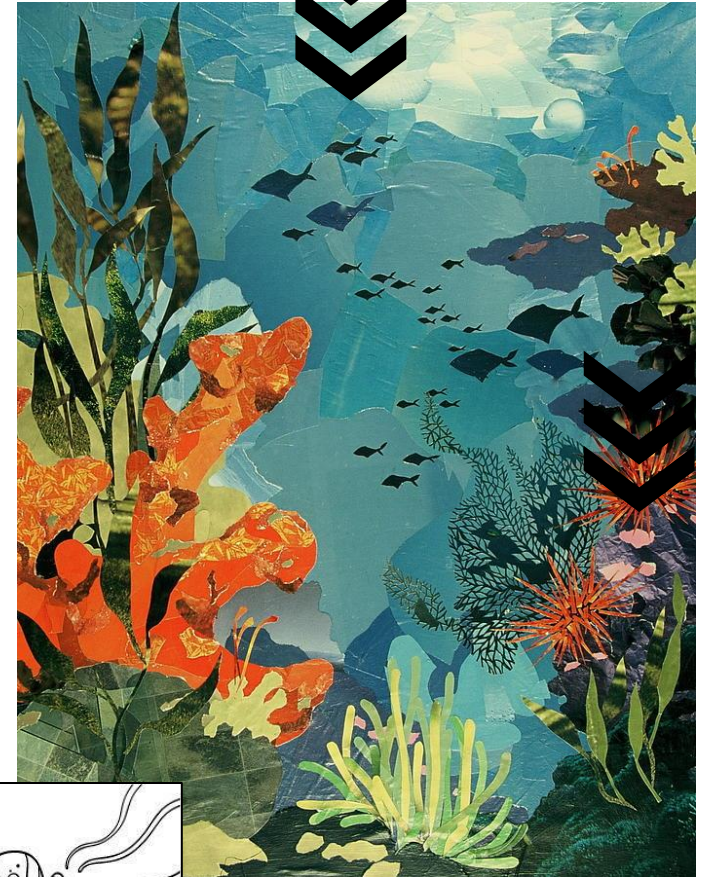
https://www.pinterest.co.uk/patty_palmer2/henri-rousseau-art-projects/

<https://www.bbc.co.uk/teach/class-clips-video/art-and-design-ks2-henri-rousseau-surprised/zrdyd6f>

<https://www.nationalgallery.org.uk/paintings/henri-rousseau-surprised>



diverse life



BOOST YOUR DRAWING CONFIDENCE...
Without taking your pen off the paper, can you copy the outlines of a variety of coral reef?

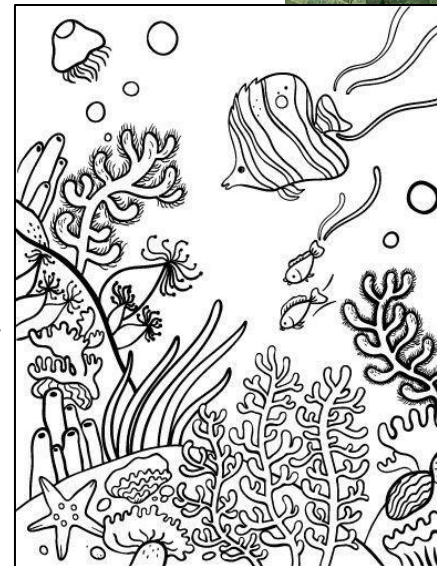


variation

DID YOU KNOW?

African coral reefs are the coral reefs which are present in Africa. Most are found along the eastern and southern coasts of Africa. The east coast corals extend from the Red Sea to Madagascar in the south, and are an important resource for the fishermen of Kenya, Tanzania, Mozambique and Madagascar.

artistic elements



contrasting

