

tonal shading/mark-making



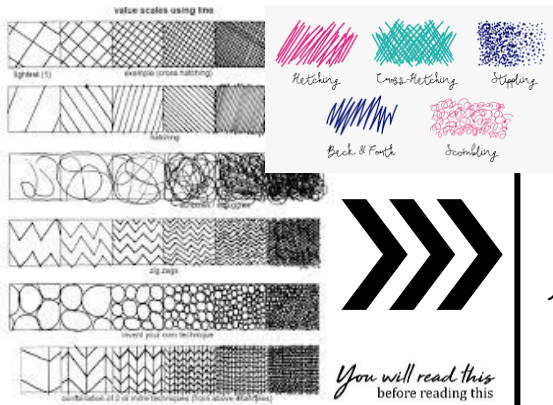
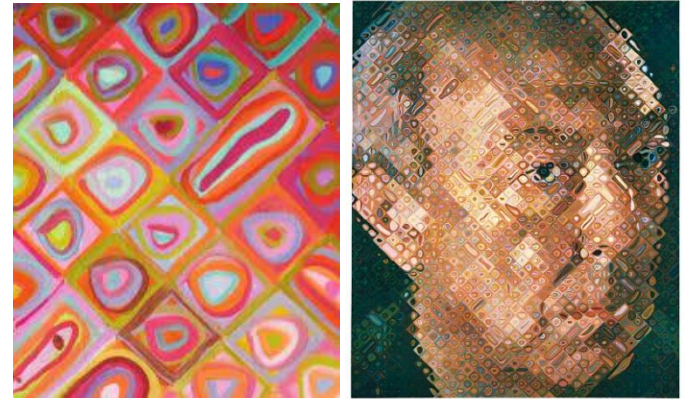
Year: 5 - Autumn 1

Subject: Art

Topic: Viking Art

Artists use layers of shading to achieve *light tones*, *mid-tones* and *dark tones*. You can also achieve lighter tones with a light pressure on the paper, so you achieve a darker tone with a heavier pressure.

Line of inquiry: How do we create a Chuck Close inspired piece of art as a class?



American artist Chuck Close (born 1940) is famous for painting giant portrait heads.

He's also well known for facing some big challenges in his life. Growing up, Close had severe learning disabilities that made it difficult for him to read. His talent for drawing and painting helped him to compensate for his academic struggles. He impressed his teachers by creating elaborate art projects to show he really was interested in his school subjects.

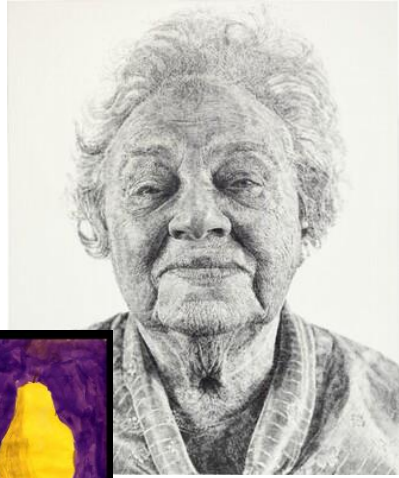
In 1988, when he was almost fifty years old, Close suffered a severe spinal artery collapse. As a result, he has only partial use of his arms and legs, and he has to rely on a wheelchair. He now uses a chair lift and motorized easel that raises, lowers, and turns the canvas to allow him to work on all parts of a painting.

collaborative art



"There's a real joy in putting all these little marks together. They may look like hot dogs, but with them I build a painting." Chuck Close

tone



contrast

THIS IS GOOD CONTRAST THIS IS BAD CONTRAST

